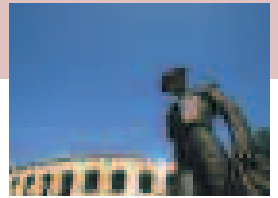
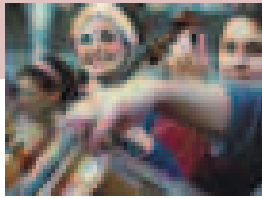




France's

Châteaux, museums, monuments, interactive centres, historic routes

cultural sites



Cultural sites in France, thousands of opportunities for exceptional visits

Imagine 40 000 monuments including 10 000 châteaux, abbeys and manor houses, 6 000 museums, 1200 parks and gardens. Plenty to make France a cultural destination par excellence. Professionals will be on hand to extend a warm welcome and to offer you the best conditions to make sure enjoy your visits. The world, historical and contemporaneous heritage is put on stage with the intent to seduce you: 2 000 festivals, exhibitions, sound and light performances combine to create a permanent show.

This brochure features close to 250 sites eager to welcome you and tell you what French culture and history are all about.

■ A SAMPLE OF FRANCE'S CULTURAL MOSAIC.

There are 250 sites overall, a tribute to the wealth and diversity of French culture: from museums to unique collections, from fine arts to the most advanced technologies, from symbolic sites and monuments rooted in prehistory to our present time, from interpretation centres which open the way for multimedia, regrouping of individual operators, itineraries and access cards to several sites so that one can visit the “must” sites as well as those more out of the beaten track.

■ A LIVING DISCOVERY OF OUR HERITAGE

All sites share in common a great know-how: extending to the public the welcome they need while providing a novel enhancement to our heritage through a mix of knowledge and leisure: interactive exhibitions, guided and multilingual visits, theme visits, reconstructions and shows, multimedia presentations and cyber-spaces, not forgetting tasting and oenological conferences, strolling on foot, cycling, riding in horse drawn carriages or electrical cars.

■ A WIDE RANGE OF SERVICES

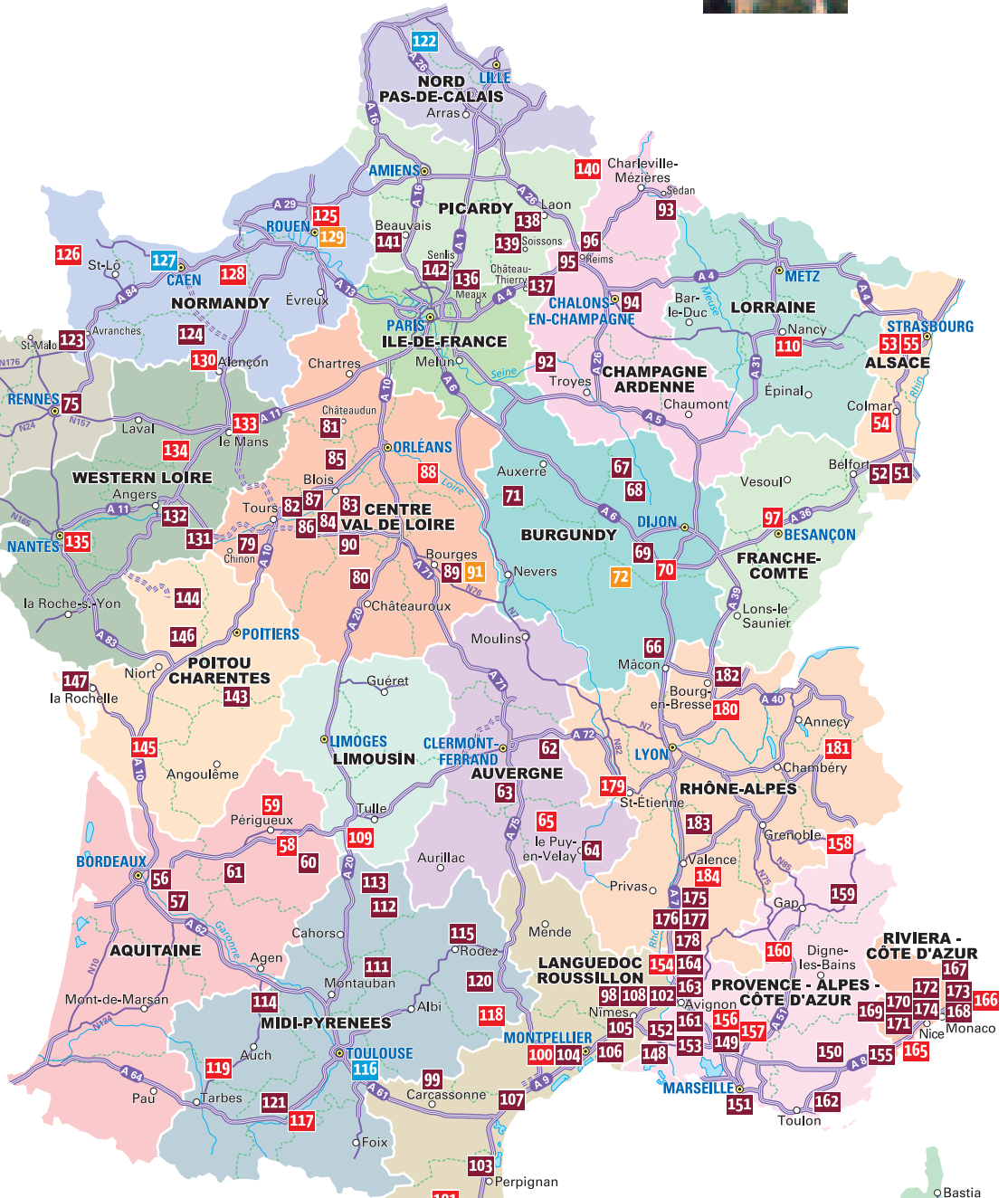
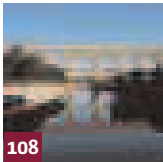
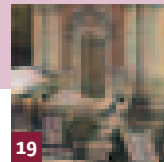
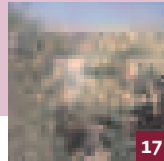
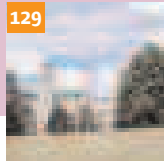
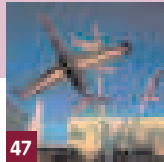
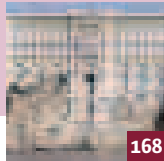
They include the widespread availability of foreign languages, catering, advance booking, but also bookshops and souvenir shops. In fact, everything is done to facilitate your visit and leave you with memories to cherish. www.franceguide.com, Arts and Culture section is at your disposal to help you prepare your visit with a variety of suggestions, fact sheets and calendars of events.

Brochure published by **Maison de la France** - Publicity and Information Divisions - Publications Department - Product Marketing Division - “Culture and Heritage” Club. Design and production: www.reactiff.com - Cartography: DSM - Translation: C. Lepage - Printed: OTT December 2006.

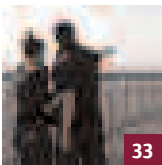
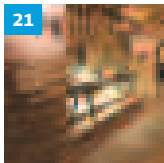
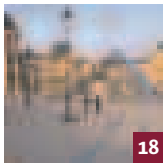
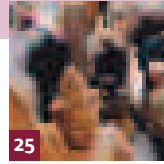
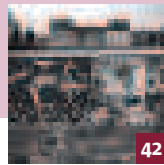
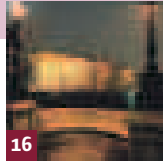
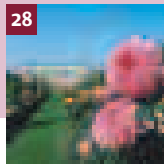
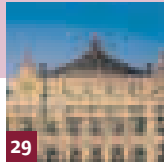
PHOTO CREDITS: Cover photo: © Maison de la France/Eric Larrayadiou

Abbaye de Fontenay, Abbaye Royale de Chaalis - G Fessy, Abbaye Royale de Royaumont - Jérôme Johnson, Association des châteaux de la Drôme - B. Lacoste, Centre des monuments nationaux - Jean Marc Charles CMN Paris, Centre Georges Pompidou - P.Migeat G Meguerditchian, Château d'Auvers - Dominique Valle, Château de Chenonceau - Valoire Blois, Château de Cheverny, Château de Condé, demeure des Princes - AYPR, Château de Vaux le Vicomte - R Mazin, Château de Versailles - C Millet EPA, Château du Clos Lucé Parc de LDV - Leonard de Serres, Château fort de Sedan - A Fauvelet, Château de Thoiry et du colombier - ALP, Cité de L'espace de Toulouse, Culturespaces - C Leroura, Espace Dalí Paris - Montmartre, France Festivals - Perroquet Bleu, Guédelon Chantier médiéval - François Folcher, Institut du Monde Arabe, La Cinémathèque française - Stéphane Dabrowski, La coupole - Sébastien Jarry Conseil général du Pas de Calais, Le mémorial de Caen - Benoît Grimbert / Jacques Millet, Musée et Compagnie, Musée d'art et d'histoire du Judaïsme Musée d'Orsay - Catherine Bibolet, Musée de l'air et de l'espace, Musée de l'armée - Hôtel national des invalides, Musée de la monnaie, Musée de Montmartre, Musée du Louvre - C Moutadre, Musée du Luxembourg, Musée du Quai Branly, Musée du vin, Musée Fabre, Musée Grévin, Musée Maxim's - Collection 1900 - Jérôme Faggiano, Musée national des arts asiatiques Guimet - JP Pinon, Musée Océanographique de Monaco, Musée vivant du Cheval - R&B press, Musée du parfum Fragonard, Muséum d'histoire naturelle, Opéra National de Paris - Palais Garnier - Jen Pierre Delagarde, Palais des papes et pont St - Bénézet - JP Campomar, Rennes Parlement de Bretagne - M Ogier, Paris story - Provins, Patrimoine mondial, Route historique des abbayes normandes - A De Montjoug, Route historique des ducs de bourgogne, Route Historique Jacques Cœur - Bernard Poisson, Site du Pont du Gard, Tour Montparnasse - Luc Frey.

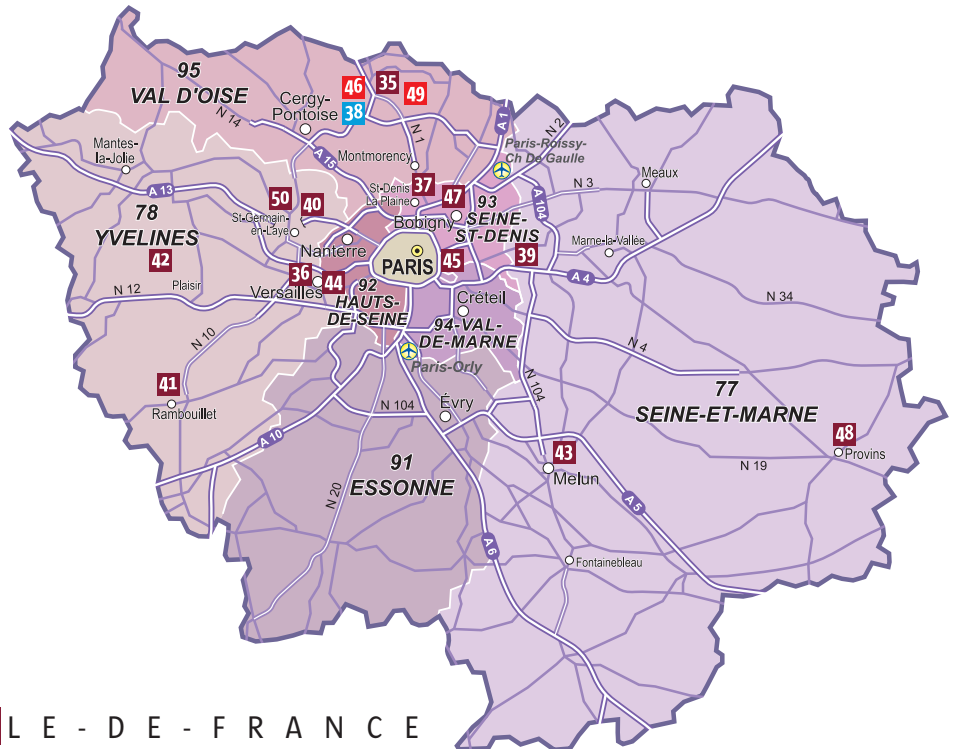
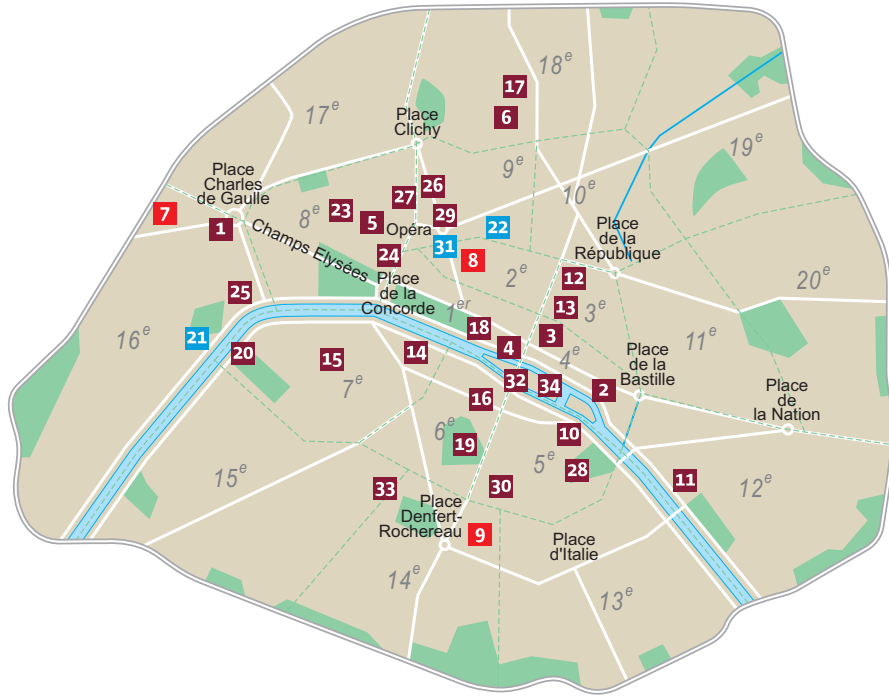
Copyright Members of the “Culture and Heritage” Club - All rights.



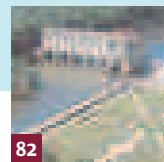
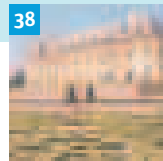
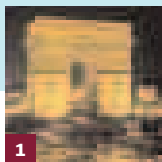
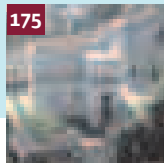
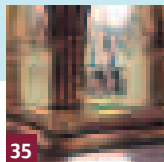
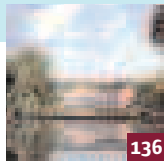
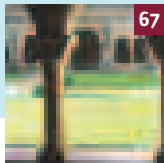
- MUSEUMS - HISTORIC MONUMENTS
- INTERACTIVE CENTRES
- HISTORIC ROUTES
- FESTIVALS



PARIS



- MUSEUMS - HISTORIC MONUMENTS
- INTERACTIVE CENTRES
- HISTORIC ROUTES
- FESTIVALS



PARIS/ILE-DE-FRANCE

PARIS

- 1** Arc de Triomphe*
☎ (0)1 55 37 73 77
- 2** Centre des monuments nationaux - Information
☎ (0)1 44 61 21 50
www.monum.fr
- 3** Centre Georges Pompidou
☎ (0)1 44 78 12 33
www.centrepompidou.fr
- 4** Conciergerie*
☎ (0)1 53 40 60 93
réservations groupes
☎ (0)1 53 40 60 97
information
- 5** Culturespaces
☎ (0)1 53 77 66 00
www.culturespaces.com
- 6** Dalí Paris - Montmartre
☎ (0)1 42 64 40 10
www.daliparis.com
- 7** Festival Chopin à Paris
☎ (0)1 45 00 22 19
- 8** Festival d'Île de France
☎ (0)1 58 71 01 01

MUSEUMS - HISTORIC MONUMENTS

INTERACTIVE CENTRES

If museums and monuments are the jewels of France's heritage, over the last ten years or so a new kind of cultural venue has been developing: the visitor centre. These highlight themes related to France's heritage using staged reconstructions and the latest multimedia and interactive techniques.

HISTORIC ROUTES

FESTIVALS

Dates and programs on:
www.francefestivals.com

VISITS MADE EASY

Each site is listed with its phone number - don't hesitate to phone for information. If phoning from outside France, remember to dial the international code (00 33) before the number.

- 9** France Festivals
☎ (0)1 56 81 01 05
www.francefestivals.com
- 10** Institut du Monde Arabe
☎ (0)1 40 51 38 38
www.imarabe.org
- 11** La Cinémathèque française
☎ (0)1 71 19 33 33
www.cinema.theque.fr
- 12** Musée & Compagnie
Information
☎ (0)1 40 13 49 13
www.rmn.fr
- 13** Musée d'art et d'histoire du Judaïsme
☎ (0)1 53 01 86 53
www.mahj.org
- 14** Musée d'Orsay
☎ (0)1 40 49 48 14
www.musee-orsay.fr
- 15** Musée de l'Armée - Hôtel National des Invalides
☎ (0)1 44 42 38 77
www.invalides.org
- 16** Musée de la Monnaie
☎ (0)1 40 46 55 35
www.monnaie.deparis.fr
- 17** Musée de Montmartre
☎ (0)1 49 25 89 37
www.museedemontmartre.fr
- 18** Musée du Louvre
☎ (0)1 40 20 50 50
www.louvre.fr
- 19** Musée du Luxembourg
☎ (0)892 684 694
www.museeduluxembourg.fr
- 20** Musée du Quai Branly
☎ (0)1 56 61 70 00
www.quaibrantly.fr
- 21** Musée du Vin
☎ (0)1 45 25 63 26
www.museeduvinparis.com
- 22** Musée Grévin
☎ (0)1 47 70 85 05
www.grevin.com
- 23** Musée Jacquemart-André
☎ (0)1 45 62 39 94
www.musee-jacquemartandre.com
- 24** Musée Maxim's
Collection 1900
☎ (0)1 42 65 30 47
www.maxims-musee-artnouveau.com

- 25** Musée national des arts asiatiques Guimet
☎ (0)1 56 52 53 00
www.museeeguimet.fr

Musées de la Parfumerie Fragonard :

- 26** Musée du Parfum
☎ (0)1 47 42 04 56
www.fragonard.com
- 27** Théâtre Musée des Capucines
☎ (0)1 42 60 37 14
www.fragonard.com
- 28** Muséum National d'Histoire Naturelle
Information
☎ (0)1 40 79 56 01
www.mnhn.fr
- Galerie de Paléontologie et d'Anatomie Comparée
☎ (0)1 40 79 54 79
- Grande Galerie de l'Evolution
☎ (0)1 40 79 54 79
- Jardin des Plantes
☎ (0)1 40 79 56 01
- Ménagerie
☎ (0)1 40 79 37 94
- Musée de l'Homme
☎ (0)1 44 05 72 72
- Parc Zoologique de Paris
☎ (0)1 44 75 20 00

- 29** Opéra National de Paris
Palais Garnier
☎ (0)1 40 01 22 63
www.operadeparis.fr

- 30** Panthéon*
☎ (0)1 44 32 18 00

- 31** Paris Story
☎ (0)1 42 66 62 06
www.paris-story.com

- 32** Sainte Chapelle*
☎ (0)1 53 40 60 93
réservations groupes
☎ (0)1 53 40 60 97
information

- 33** Tour Montparnasse
☎ (0)1 45 38 52 56
www.tourmontparnasse56.com

- 34** Tours de la cathédrale de Notre-Dame de Paris*
☎ (0)1 44 32 16 70

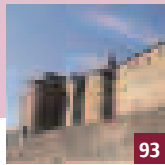
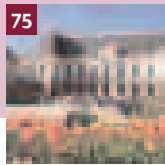
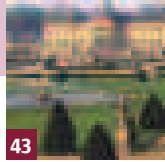
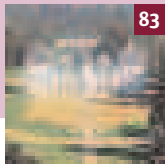
ILE-DE-FRANCE

- 35** Abbaye Royale de Royaumont
☎ (0)1 30 35 59 70
www.royaumont.com
- 36** Arboretum de Chèvreloup
☎ (0)1 39 55 53 80
- 37** Basilique de Saint-Denis*
☎ (0)1 48 09 83 54
- 38** Château d'Auvers
☎ (0)1 34 48 48 48
www.chateau-auvers.fr
- 39** Château de Champs-sur-Marne*
☎ (0)1 60 05 24 43
- 40** Château de Maisons*
☎ (0)1 39 62 01 49
- 41** Château de Rambouillet*
☎ (0)1 34 83 00 25
- 42** Château de Thoiry
☎ (0)1 34 87 49 26
www.thoiry.net
- 43** Château de Vaux Le Vicomte
☎ (0)1 64 14 41 90
www.vaux-le-vicomte.com
- 44** Château de Versailles
☎ (0)1 30 83 78 00
www.chateauf Versailles.fr
- 45** Château de Vincennes*
☎ (0)1 48 08 31 20
- 46** Festival d'Auvers-sur-Oise
☎ (0)1 30 36 77 77
- 47** Musée de l'Air et de l'Espace
☎ (0)1 49 92 70 62
www.mae.org
- 48** Provins, Patrimoine Mondial
☎ (0)1 64 60 26 26
www.provins.net
- 49** Saison musicale de Royaumont
☎ (0)1 34 68 05 50
- 50** Villa Savoye à Poissy*
☎ (0)1 39 65 01 06

RÉGIONS

ALSACE

- 51** Cité de l'Automobile - Musée National, Collection Schlumpf
☎ (0)3 89 33 23 23
www.collection-schlumpf.com
- 52** Cité du Train
☎ (0)3 89 42 83 33
www.citedutrain.com



- 53** Festival de musique de Strasbourg
☎ (0)3 88 32 43 10
- 54** Festival international de Colmar
☎ (0)3 89 20 68 97
- 55** Musica - Festival international des musiques d'aujourd'hui - Strasbourg
☎ (0)3 88 23 46 46

AQUITAINE

- 56** Abbaye de la Sauve-Majeure*
☎ (0)5 56 23 01 55
- 57** Château des ducs d'Epéron à Cadillac*
☎ (0)5 56 62 69 58
- 58** Festival du Périgord noir
☎ (0)5 53 51 95 17
☎ (0)5 53 51 61 61
- 59** Festival international Sinfonia en Périgord
☎ (0)5 53 04 78 49
- 60** Grotte de Font-de-Gaume*
☎ (0)5 53 06 86 00
- 61** Site archéologique de Montcaret*
☎ (0)5 53 58 50 18

AUVERGNE

- 62** Château d'Aulteribe*
☎ (0)4 73 53 14 55
- 63** Château de Villeneuve-Lembron*
☎ (0)4 73 96 41 64
- 64** Cloître et baptistère de la Cathédrale du Puy*
☎ (0)4 71 05 45 52
- 65** Festival de la Chaise-Dieu
☎ (0)4 71 00 01 16

BURGUNDY

- 66** Abbaye de Cluny*
☎ (0)3 85 59 12 79
- 67** Abbaye de Fontenay
☎ (0)3 80 92 15 00
www.abbayedefontenay.com
- 68** Château de Bussy-Rabutin*
☎ (0)3 80 96 00 03
- 69** Château de Châteauneuf-en-Auxois*
☎ (0)3 80 49 21 89

- 70** Festival international d'opéra baroque de Beaune
☎ (0)3 80 22 97 20
- 71** Guédelon Chantier Médiéval
☎ (0)3 86 45 66 66
www.guedelon.fr
- 72** Route Historique des Ducs de Bourgogne
☎ (0)3 85 82 09 86
www.routedesducs.com

BRITANNY

- 73** Cairn de Barnenez*
☎ (0)2 98 67 24 73
- 74** Festival de Lanvellec
☎ (0)2 96 35 14 14
- 75** Palais du Parlement de Bretagne
☎ (0)2 99 67 11 11
www.tourisme-rennes.com
- 76** Semaines musicales de Quimper
☎ (0)2 98 95 32 43
- 77** Site mégalithique de Carnac*
☎ (0)2 97 52 29 81
- 78** Site mégalithique de Locmariaquer*
☎ (0)2 97 57 37 59

CENTRE - VAL DE LOIRE

- 79** Château d'Azay-le-Rideau*
☎ (0)2 47 45 42 04
- 80** Château de Bouges*
☎ (0)2 54 35 88 26
- 81** Château de Châteaudun*
☎ (0)2 37 94 02 90
- 82** Château de Chenonceau
☎ (0)2 47 23 90 07
www.chenonceau.com
- 83** Château de Cheverny
☎ (0)2 54 79 96 29
www.chateau-cheverny.fr
- 84** Château de Fougères-sur-Bièvre*
☎ (0)2 54 20 27 18
- 85** Château de Talcy*
☎ (0)2 54 81 03 01
- 86** Château du Clos-Lucé - Parc Leonardo da Vinci
☎ (0)2 47 57 00 73
www.vinci-closluce.com

- 87** Château et écuries de Chaumont-sur-Loire*
☎ (0)2 54 51 26 26
- 88** Festival international de Sully-sur-Loire
☎ (0)2 38 36 29 46
- 89** Palais Jacques Cœur à Bourges*
☎ (0)2 48 24 06 87
- 90** Parc & Château de Valencay
☎ (0)2 54 00 15 71
www.chateau-valencay.com
- 91** Route historique Jacques Cœur Information
☎ (0)2 48 65 31 55
www.route-jacques-coeur.org

CHAMPAGNE-ARDENNE

- 92** Château de la Motte Tilly*
☎ (0)3 25 39 84 54
- 93** Château Fort de Sedan
☎ (0)3 24 27 73 73
www.sedan-bouillon.com
- 94** Cloître de Notre-Dame en Vaux à Châlons-en-champagne*
☎ (0)3 26 64 03 87
- 95** Palais du Tau à Reims*
☎ (0)3 26 47 81 79
- 96** Tours de la cathédrale de Reims*
☎ (0)3 26 47 81 79

FRANCHE COMTE

- 97** Festival international de musique de Besançon Franche-Comté
☎ (0)3 81 25 05 85

LANGUEDOC-ROUSSILLON

- 98** Chartreuse du Val de Bénédiction de Villeneuve-lez-Avignon*
☎ (0)4 90 15 24 24
- 99** Château Comtal de la Cité de Carcassonne*
☎ (0)4 68 11 70 70
- 100** Festival de Radio-France et Montpellier Languedoc-Roussillon
☎ (0)4 67 02 02 01
- 101** Festival Pablo Casals de Prades
☎ (0)4 68 96 33 07
- 102** Fort Saint-André à Villeneuve-lez-Avignon*
☎ (0)4 90 25 45 35

- 103** Forteresse de Salses*
☎ (0)4 68 38 60 13
- 104** Musée Fabre
☎ (0)4 67 14 83 00
www.ot-montpellier.fr
- 105** Nîmes Romaine - Arènes de Nîmes, Maison Carrée et Tour Magne
☎ (0)4 66 21 82 56
www.nimes-romaine.com
- 106** Remparts, tour de Constance, Logis du Gouverneur d'Aigues-Mortes*
☎ (0)4 66 53 61 55
- 107** Site archéologique d'Ensérune*
☎ (0)4 67 37 01 23
- 108** Site du Pont du Gard
☎ (0)820 903 330
www.pontdugard.fr

LIMOUSIN

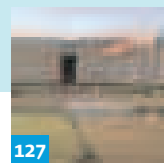
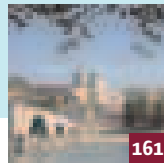
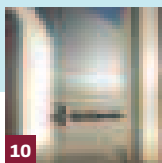
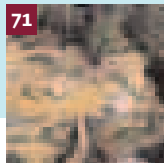
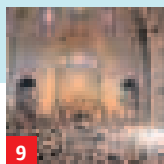
- 109** Festival de la Vèzère
☎ (0)5 55 23 25 09

LORRAINE

- 110** Nancyphonies Festival de Nancy
☎ (0)3 83 96 43 24

MIDI-PYRÉNÉES

- 111** Abbaye de Beaulieu-en-Rouergue*
☎ (0)5 63 24 50 10
- 112** Château d'Assier*
☎ (0)5 65 40 40 99
- 113** Château de Castelnaud-Bretenoux*
☎ (0)5 65 10 98 00
- 114** Château de Gramont*
☎ (0)5 63 94 05 26
- 115** Château du Colombier
☎ (0)5 65 74 99 79
http://colombier.thoiry.net
- 116** Cité de l'espace de Toulouse
☎ (0)820 377 223
(12 centimes TTC / minute)
www.cite-espace.com
- 117** Festival du Comminges
☎ (0)5 61 88 32 00



118 Festival international de musique sacrée de Sylvanès
☎ (0)5 65 98 20 20

119 Jazz in Marciac
☎ (0)892 690 277
(0,34 euros/mn)

120 Site archéologique de La Graufesenque*
☎ (0)5 65 60 11 37

121 Site archéologique de Montmaurin*
☎ (0)5 61 88 74 73

NORD PAS DE CALAIS

122 La Coupole
☎ (0)3 21 12 27 27
www.lacoupole-france.com

NORMANDY

123 Abbaye du Mont-Saint-Michel*
☎ (0)2 33 89 80 00

124 Château de Carrouges*
☎ (0)2 33 27 20 32

125 Festival Automne en Normandie
☎ (0)2 32 10 87 07

126 Heures musicales de l'abbaye de Lessay
☎ (0)2 33 45 14 34

127 Le Mémorial de Caen
☎ (0)2 31 06 06 44
www.memorial-caen.fr

128 Promenades musicales en Pays d'Auge
☎ (0)2 31 31 06 00

129 Route Historique des Abbayes Normandes
Information
☎ (0)2 35 12 41 60
www.abbayes-normandes.com

130 Septembre musical de l'Orne
☎ (0)2 33 26 99 99

WESTERN LOIRE

131 Abbaye royale de Fontevraud*
☎ (0)2 41 51 71 41

132 Château d'Angers*
☎ (0)2 41 86 48 77

133 Festival de l'Epau
☎ (0)2 43 54 73 45

134 Festival de Sablé
☎ (0)2 43 62 22 22

135 Printemps des arts de Nantes
☎ (0)2 40 20 69 70

PICARDY

136 Abbaye Royale de Chaalis
☎ (0)3 44 54 04 02
www.chaalis.fr

137 Château de Condé, Demeure des Princes
☎ (0)3 23 82 42 25
www.chateauduconde.com

138 Château de Coucy*
☎ (0)3 23 52 71 28

139 Château de Pierrefonds*
☎ (0)3 44 42 72 72

140 Festival de musique ancienne et baroque de l'abbaye de Saint-Michel-en-Thierache
☎ (0)3 23 58 23 74

141 Galerie nationale de la tapisserie à Beauvais*
☎ (0)3 44 15 39 10

142 Musée Vivant du Cheval
☎ (0)3 44 57 40 40
www.museevivantducheval.fr

POITOU-CHARENTES

143 Abbaye de Charroux*
☎ (0)5 49 87 62 43

144 Château d'Oiron*
☎ (0)5 49 96 51 25

145 Festival de Saintes
☎ (0)5 46 97 48 48

146 Site archéologique de Sanxay*
☎ (0)5 49 53 61 48

147 Tours de la Rochelle - Tour de la Lanterne et Tour Saint-Nicolas*
☎ (0)5 46 41 56 04

PROVENCE-ALPES-CÔTE-D'AZUR

148 Abbaye de Montmajour à Arles*
☎ (0)4 90 54 64 17

149 Abbaye de Silvacane*
☎ (0)4 42 50 41 69

150 Abbaye du Thoronet*
☎ (0)4 94 60 43 90

151 Château d'If*
☎ (0)4 91 59 02 30

152 Château de Tarascon*
☎ (0)4 90 91 01 93

153 Château des Baux-de-Provence
☎ (0)4 90 54 55 56
www.chateau-baux-provence.com

154 Chorégies d'Orange
☎ (0)4 90 34 24 24

155 Cloître de la cathédrale de Fréjus*
☎ (0)4 94 51 26 30

156 Festival international de quatuor à cordes du Lubéron
☎ (0)4 90 75 89 60

157 Festival international de piano de la Roque d'Anthéron
☎ (0)4 42 50 51 15

158 Festival Messiaen au pays de la Meije
☎ (0)4 76 79 90 05

159 Forteresse de Mont-Dauphin*
☎ (0)4 92 45 42 40

160 Nuits de la citadelle de Sisteron
☎ (0)4 92 61 06 00

161 Palais des Papes et Pont St-Benezet
☎ (0)4 90 27 50 00
www.avignon-tourisme.com

162 Site archéologique d'Olbia*
☎ (0)4 94 57 98 28

163 Site archéologique de Glanum*
☎ (0)4 90 92 23 79

164 Théâtre Antique d'Orange & Musée d'Art et d'Histoire
☎ (0)4 90 51 17 60
www.theatre-antique.com

RIVIÈRA CÔTE-D'AZUR

165 Festival international d'art sacré d'Antibes
☎ (0)4 93 74 53 58

166 Festival de musique de Menton
☎ (0)4 92 41 76 51

167 Monastère de Saorge*
☎ (0)4 93 04 55 55

168 Musée océanographique de Monaco
☎ 00 377 93 15 36 00
www.oceano.mc

169 Musées de la Parfumerie Fragonard
Information
☎ (0)4 93 36 44 65
www.fragonard.com

170 Musée Privé de la Parfumerie

171 Musée Provençal du Costume et du Bijou

172 Trophée d'Auguste à La Turbie*
☎ (0)4 93 41 20 84

173 Villa & Jardins Ephrussi de Rothschild
☎ (0)4 93 01 33 09
www.villa-ephrussi.com

174 Villa Grecque Kérylos
☎ (0)4 93 01 01 44
www.villa-kerylos.com

RHÔNE-ALPES

175 Association des Châteaux de la Drôme - Information
☎ (0)4 75 82 19 26
www.ladrometourisme.com

176 Château des Adhémar de Montélimar
☎ (0)4 75 00 62 30

177 Château de Grignan
☎ (0)4 75 91 83 55

178 Château de Suze-la-Rousse
☎ (0)4 75 04 81 44

179 Été musical de la Loire
☎ (0)4 77 49 90 13

180 Festival de musiques anciennes d'Ambronay
☎ (0)4 74 38 74 00

181 Festival de Tarentaise
☎ (0)4 79 38 83 12

182 Monastère de Brou à Bourg-en-Bresse*
☎ (0)4 74 22 83 83

183 Palais Idéal du Facteur Cheval de Hauterives
☎ (0)4 75 68 81 19
www.facteurcheval.com

184 Saoû chante Mozart
☎ (0)4 75 76 02 02

The “Culture and Heritage” Club of Maison de la France

67 ABBAYE DE FONTENAY

A masterpiece of Romanesque art, the abbey founded by St Bernard in 1118 has remained intact at the bottom of a valley designated as a conservation site. It was listed as a World Heritage Site by UNESCO in 1981.

136 ABBAYE ROYALE DE CHAALIS

It was founded in 1137 by King Louis VI. The 13th century chapel is decorated with the famous Primatice frescoes and the gardens were created in the Renaissance by Cardinal d'Este. The castle and museum is a former 18th century palace brings together Jaquemart-André and JJ Rousseau collections.

35 ABBAYE ROYALE DE ROYAUMONT

Surrounded by protected marshlands and forest, the abbey of Royaumont, founded in 1228 by King Louis IX (Saint Louis), is the best-preserved Cistercian abbey in Ile-de-France.

175 ASSOCIATION DES CHÂTEAUX DE LA DRÔME

The Drôme's most beautiful châteaux, an outstanding built heritage, are testaments to Renaissance and medieval architecture. 175 - 176 - 177 - 178 - 183

2 CENTRE DES MONUMENTS NATIONAUX

The Centre des monuments nationaux welcomes visitors to more than 100 monuments located in all regions. The diversity of national monuments illustrates the richness of France's heritage.

1 - 2 - 4 - 30 - 32 - 34 - 37 - 39 - 40 - 41 - 45 - 50 - 56 - 57 - 60 - 61 - 62
63 - 64 - 66 - 68 - 69 - 73 - 77 - 78 - 79 - 80 - 81 - 84 - 85 - 87 - 89 - 92 - 94 - 95
96 - 98 - 99 - 102 - 103 - 106 - 107 - 111 - 112 - 113 - 114 - 120 - 121 - 123 - 124
131 - 132 - 138 - 139 - 141 - 143 - 144 - 146 - 147 - 148 - 149 - 150 - 151 - 152
155 - 159 - 162 - 163 - 167 - 172 - 182

3 CENTRE GEORGES POMPIDOU

In a unique 20th century architecture, the Pompidou Centre houses the very first modern and contemporary art collection in Europe, a large reading library for the public, an institute for musical studies and a variety of auditoriums.

38 CHÂTEAU D'AUVERS

40 km from Paris, take a “Journey to the Time of the Impressionists” to relive and learn about the fabulous artistic adventure of Cézanne, Monet, Van Gogh and others, with an audioguide promenade tour translated into 8 languages.

82 CHÂTEAU DE CHENONCEAU

Built on the banks of the river Cher, right in the heart of this cradle of French Renaissance which is the Loire Valley region, Chenonceau – the Dames Château – is one of the best known and most visited monument in France.

83 CHÂTEAU DE CHEVERNY

The castle with the richest furnishings in the Loire Valley. Explore the park and canal by electric car and boat (April to November); visit the permanent exhibition on the world of Tintin “The secrets of Marlinspike Hall”.

137 CHÂTEAU DE CONDE, DEMEURE DES PRINCES

The jewel is inside! An artist's palette and a sparkling history on the champagne trail - Watteau, Princes of Condé and Savoie - entertaining tour, treasure hunt, 1200 lead soldiers.

43 CHÂTEAU DE VAUX LE VICOMTE

This is where the plans for Versailles took shape in the mind of the young Louis XIV. Enjoy the castle and gardens by candlelight.

44 CHÂTEAU DE VERSAILLES

A magnificent royal residence, the Château de Versailles is surrounded by an immense estate with a park and gardens in which you can visit the 2 Trianon palaces, the Queen's Hamlet and 2 art museums exhibiting all forms of artistic expression...

86 CHÂTEAU DU CLOS LUCE PARC LEONARDO DA VINCI

The last residence of Leonardo da Vinci and its landscape garden display the home life of the master and his multidisciplinary intuitions.

93 CHÂTEAU FORT DE SEDAN

Measuring 35,000 sq m, the Château Fort de Sedan is Europe's largest fortress. Now listed as an historic monument, it tells you its story through the Historium, a tour circuit taking you through various scenes of life reconstructed in minute detail, showing the lives of people and soldiers under the Principality.

42 CHÂTEAUX DE THOIRY ET DU COLOMBIER

The historic châteaux and gardens of the Counts of Panouse offer all ages a glimpse of a completely different world with costumed guides, events, concerts, theatre, cultural and botanical activities: Thoiry, near Paris, its garden and Renaissance château with its esoteric architecture and famous wildlife reserve, and the Medieval Eden of the Château du Colombier near Rodez, listed as a “Remarkable Garden” with its storyteller, herbalist, Live Bestiary, offer enjoyable and adventurous days out. 43 - 115

115 CITÉ DE L'ESPACE DE TOULOUSE

The European Space discovery park, organised events and interactive exhibitions, planetarium, astronomical park, the Terr@dôme.

5 CULTURES PACES

An innovative approach to sharing its passionate dedication to heritage sites with all audiences. A lively and fascinating tour of 13 French museums and monuments. 5 - 23 - 51 - 52 - 90 - 105 - 153 - 164 - 173 - 174

6 DALÍ PARIS - MONTMARTRE

Right in the heart of picturesque Montmartre, the Espace-Dalí presents the only permanent exhibition in France to be entirely devoted to the master of surrealism. More than 300 original works are on show.

9 FRANCE FESTIVALS

More than 80 international music festivals join forces to offer you an exceptional choice of events, ranging from opera to chamber music, from illustrious classics to unusual programmes.
7 - 8 - 9 - 46 - 49 - 53 - 54 - 55 - 58 - 59 - 65 - 70 - 74 - 76 - 88 - 97 - 100 - 101
109 - 110 - 117 - 118 - 119 - 125 - 126 - 128 - 130 - 133 - 134 - 135 - 140 - 145
154 - 156 - 157 - 158 - 160 - 165 - 166 - 179 - 180 - 181 - 184

71 GUÉDELON CHANTIER MÉDIEVAL

They found a wild site, an old wooded quarry, a landscape from the year 1000. With the stone from the quarry and these woods, they are building a fortress according to the techniques of the 13th century.

10 INSTITUT DU MONDE ARABE

Founded under French law, the Institut du Monde Arabe has a vocation to develop the public's knowledge of the Arab world and to promote its culture and civilisation in France and Europe at large.

11 LA CINÉMATHEQUE FRANCAISE

An essential place to visit on world cinema history, the Cinémathèque has a permanent collection, hosts major temporary exhibitions and of course complete retrospectives.

122 LA COUPOLE

Rehabilitated, as a memory and history centre, La Coupole is a gigantic underground bunker conceived by the nazis in 1943 - 1944 where you will discover in a most impressive setting the stakes of total warfare as well as the steps leading to the conquest of space.

127 LE MÉMORIAL DE CAEN

History as a mean to build peace. A journey into the heart of 20th century history, from 1919 to the fall of the Berlin wall, using a spectacular staging of events.

12 MUSÉE & COMPAGNIE

Direct-entry and specially-priced tickets giving access to the most important museums and exhibitions in France.

13 MUSÉE D'ART ET D'HISTOIRE DU JUDAÏSME

The history and the cultural and artistic heritage of Jewish communities from the Middle Ages to the 20th century in France and worldwide.

14 MUSÉE D'ORSAY

In the heart of Paris, the Musée d'Orsay has on display the greatest works by artists of the period between 1848 and 1914: Monet, Manet, Degas, Renoir, Van Gogh, Gauguin, Courbet, Millet, Rodin, Carpeaux and more.

47 MUSÉE DE L'AIR ET DE L'ESPACE

More than 150 genuine aircraft and machines relating to all aspects of the conquest of air and space, from the first balloons to the Ariane rockets.

15 MUSÉE DE L'ARMÉE HÔTEL NATIONAL DES INVALIDES

The Hôtel National des Invalides, a masterpiece of Parisian classical architecture, is home nowadays to the Musée de l'Armée (army museum), one of the biggest museums of military history in the world. The jewel of this building is the Dôme des Invalides, in which the monumental tomb of Emperor Napoleon I lies.

16 MUSÉE DE LA MONNAIE

The story of money in France from its origins, in the most modern museum of its kind: the evolution of monetary history and technology.

17 MUSÉE DE MONTMARTRE

The Musée de Montmartre tells the history of the Butte de Montmartre in the 19th century through an exhibition of paintings, drawings and posters on the artists who lived there.

18 MUSÉE DU LOUVRE

A palace with almost encyclopaedic collections: from the civilisations of Ancient Greece and Rome to Western civilisation from the Middle Ages to 1848.

19 MUSÉE DU LUXEMBOURG

The Luxembourg Museum has been source of both enthusiasm and disappointment, of pride as well as scorn, of ambition and indignation. Exhibitions organised by sVo in the Luxembourg Museum have been visited by close to 4 million people since the year 2000.

20 MUSÉE DU QUAI BRANLY

The museum is dedicated to arts and civilisations from Africa, Oceania and Americas and features both permanent collections and temporary exhibitions which contribute to making it a quite unique place for dialogue between different cultures.

21 MUSÉE DU VIN

An evocation of French wines and vineyards in the Passy Monastery in Paris. Oenological conferences, seminars, luncheons, reception facilities, wine tastings.

104 MUSÉE FABRE

A jewel among provincial museums, the Fabre Museum reopens its doors after completing four years of intensive work with a view to re-think - restore and enlarge its exhibition spaces. There are more than 800 works displayed over an area of some 9000 sq. metres for the delight of all visitors.

22 MUSÉE GREVIN

Created in 1882, the Grevin Museum has now become the absolute must in the Paris entertainment scene. Surrounded by dazzling décors – some of them classified in the Historical Monuments Inventory – visitors will discover close to 300 figures representing well known jet set personalities both French and foreign with which he can be photographed !

24 MUSÉE MAXIM'S - COLLECTION 1900

Right in the heart of one of Paris Belle Epoque most mythical address, the Maxim's Museum presents an exceptional collection of Art Nouveau objects. More than 650 pieces bearing the signatures of Majorelle, Gallé, Liberty, Tiffany, Toulouse-Lautrec are displayed in situ in the apartment of an elegant Parisian in the year 1900.

25 MUSÉE NATIONAL DES ARTS ASIATIQUES GUIMET

The biggest museum of Asian art in Europe: in a magnificently renovated setting filled with a sense of serenity, discover the arts and religions of Asia, an inexhaustible source of knowledge and wonders.

168 MUSÉE OcéANOGRAPHIQUE DE MONACO

This temple to the sea has on display 4,000 fish from every sea in the world and a lagoon with sharks. See the exhibitions on Prince Albert I, the museum's founder, and on Captain Cousteau.

142 MUSÉE VIVANT DU CHEVAL

An authentic, living educational and cultural venue housed in the Great Stables of the Princes of Condé, an architectural masterpiece of the French 18th century. Majestic horse shows and educational dressage shows all year round.

169 MUSÉES DE LA PARFUMERIE FRAGONARD

An introduction to the secrets of perfume. You will discover a marvellous collection reflecting 3,000 years of the history of perfume, an authentic and traditional skill. 26 - 27 - 170 - 171

28 MUSÉUM NATIONAL D'HISTOIRE NATURELLE

Visitors sensitive to the challenges of human and natural sciences are welcomed to its exhibition halls, and its botanical and zoological gardens. From a simple walk to guided tours, it offers educational and relaxing areas on 4 sites in Ile-de-France. 28 - 36

29 OPÉRA NATIONAL DE PARIS - PALAIS GARNIER

In your quest to discover a living heritage, the Palais Garnier, a temple to opera and ballet, will surprise you with the wealth of its architecture and its opulent interiors.

161 PALAIS DES PAPES ET PONT ST-BENEZET

The biggest Gothic palace in the world. A legendary bridge, known worldwide through the song, “sur le pont d'Avignon”.

75 PALAIS DU PARLEMENT DE BRETAGNE

Ranks as a major building in Breton heritage. It was designed by Salomon de Brosse and represents a testimony quite unique in France of the royal and Parisian grand décor in the 17th century.

31 PARIS STORY

The first visitor interpretation centre on Paris. Multimedia show, interactive scale model, video gallery: 1 hr 15 mins of culture and fun giving an insight into the soul of Paris.

48 PROVINS, PATRIMOINE MONDIAL

In the 12th and 13th centuries, Provins was famous for its Champagne fairs. With its imposing ramparts, this medieval city boasts no less than 58 monuments and is featured on the UNESCO World Heritage List. Visits, shows and many festive events are presented throughout the year!

129 ROUTE HISTORIQUE DES ABBAYES NORMANDES

36 abbays and priories in Normandy; prestigious monuments, imposing ruins, a carefully restored heritage, “Coeur d'abbayes” audio-visual tour.

72 ROUTE HISTORIQUE DES DUCS DE BOURGOGNE

17 of the most beautiful tourist sites in Burgundy - famous for over 500 years for the extraordinary richness of its historical, architectural and gastronomic heritage and the beauty of its landscapes.

91 ROUTE HISTORIQUE JACQUES CŒUR

18 historic monuments and towns of character in Berry: castles, museums, gardens, concerts, night-time illuminations, festivals, exhibitions...

108 SITE DU PONT DU GARD

A Unesco World Heritage Site, the Pont du Gard is the highest aqueduct-bridge and the most visited ancient monument in France. In a redeveloped site, discover lots of activities which help you learn more about this monument which is unique in the world.

33 TOUR MONTPARNASSE

A 360° panorama across Paris: a newly refurbished interior on the 56th floor, lots of interactive terminals, panoramic bar and open-air terrace where you can admire the finest view of Paris.